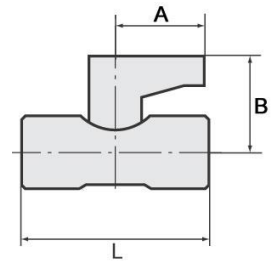


Stainless steel.

Material	Stainless steel 1.4401 (AISI 316)
Stem	Stainless steel 1.4401 (AISI 316)
Seal	FKM
Ball seal	PTFE
Rotating handle	Aluminium
Operating temperature	-20 °C to +120 °C
Operating pressure	max. 63 bar


**Mini ball valves, stainless steel, 2 x female thread**

Art. No.	Type No.	Thread	DN	L	A	B
				mm	mm	mm
103489	376.01-ES	G 1/4	8	40.0	22.8	26.5
103490	376.02-ES	G 3/8	10	42.0	22.8	26.5
103491	376.03-ES	G 1/2	15	46.0	22.8	28.3



376.01-ES

**Mini ball valves, stainless steel, female/male thread**

Art. No.	Type No.	Thread	DN	L	A	B
				mm	mm	mm
103492	377.01-ES	G 1/4	8	40.0	22.8	26.5
103493	377.02-ES	G 3/8	10	42.0	22.8	26.5
103494	377.03-ES	G 1/2	15	46.0	22.8	28.3



377.01-ES

**Mini ball valves, stainless steel, 2 x male thread**

Art. No.	Type No.	Thread	DN	L	A	B
				mm	mm	mm
103495	379.01-ES	G 1/4	8	50.0	22.8	26.5
103496	379.02-ES	G 3/8	10	50.0	22.8	26.5
103497	379.03-ES	G 1/2	15	58.0	22.8	28.3



379.01-ES